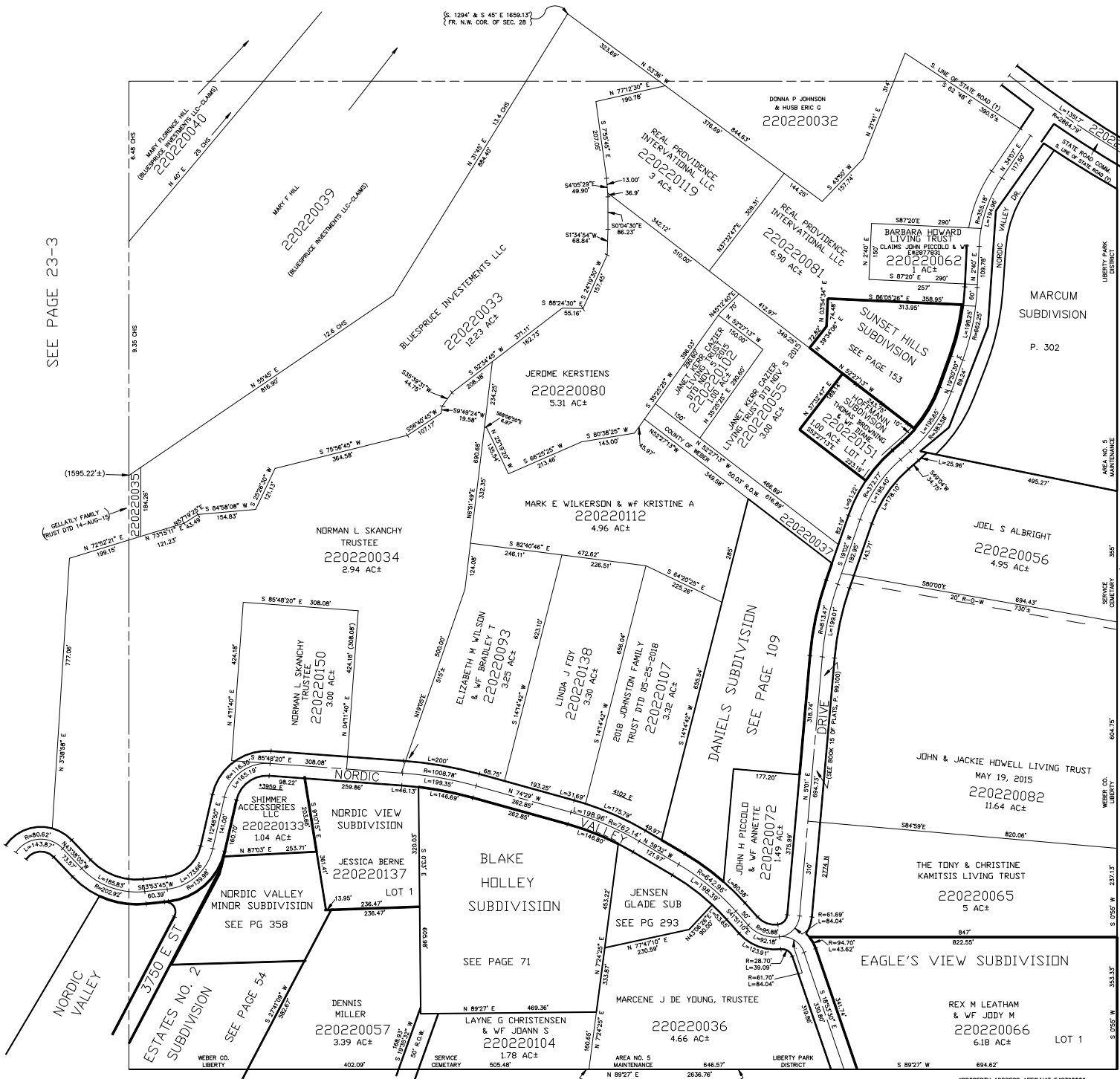


S.W. 1/4 OF SECTION 28, T.7N., R.1E., S.L.B. & M.  
IN WEBER COUNTY  
SCALE 1" = 200'

TAXING UNIT: 36

SEE PAGE 22-4

SEE PAGE 23-3



NOTE: THIS QUARTER IS BASED ON THE MODERN SURVEY DESCRIPTIONS. IT CONFLICTS WITH ADJOINING PLAT OF N.W. 1/4